

# State of Wyoming Corner Record

(In compliance with the CORNER PERPETUATION AND FILING ACT, Wyoming Statutes, 2013 Section 33-29-901 through 33-29-910, and the Rules and Regulations of the Board of Professional Engineers and Professional Land Surveyors)

Reverse side of this form may be used if more space is needed.

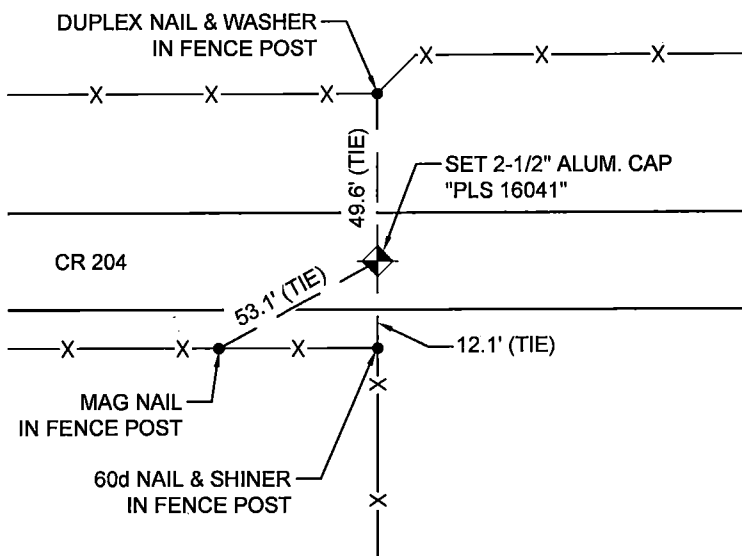
Record of original survey and citation of source of historical information (if corner is lost or obliterated). Description of corner monumentation evidence found and/or monument and accessories established to perpetuate the location of this corner. Sketch of relative location of monument, accessories, and reference points with course and distance to adjacent corner(s) (if determined in this survey). Method and rationale for reestablishment of lost or obliterated corner.

FOUND: BENT #5 REBAR, UPGRADE TO 3/4" X 30" LONG WITH 2-1/2" ALUMINUM CAP, 0.7' BELOW GRADE IN CENTER OF ROAD, "PLS 16041". FOUND TIES AS SHOWN.

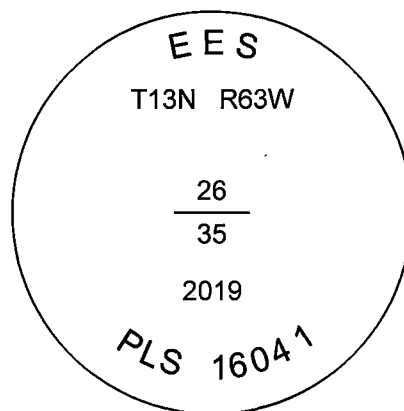
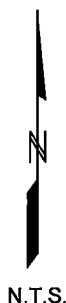
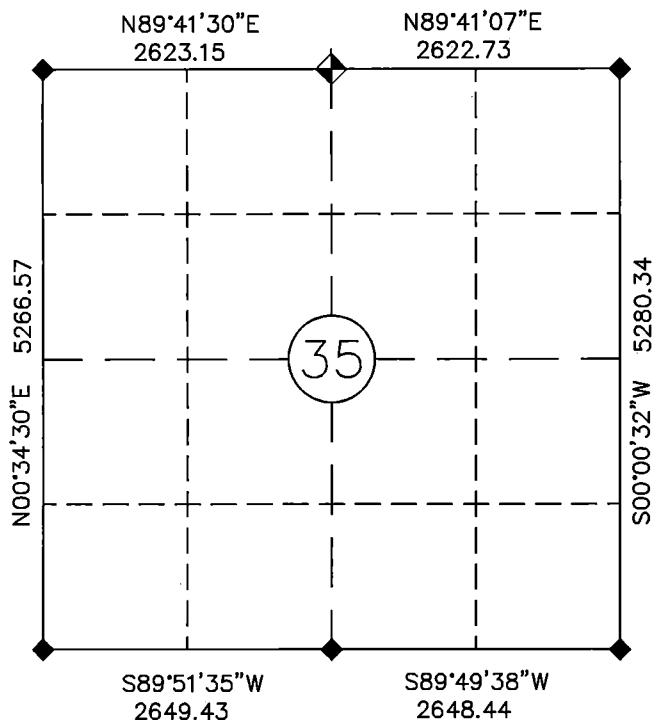
## Legend

- MONUMENT FOR THIS CORNER RECORD
- FOUND ALUM CAP

BEARINGS FROM GPS GRID UTM83 ZONE 13  
DISTANCES ARE GPS GRID



## Monument location

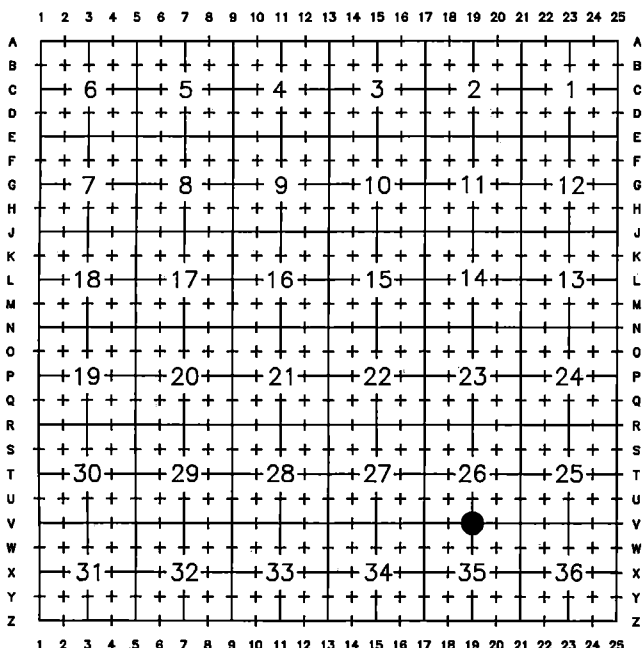


## Monument Inscription

Date of Field Work: NOV. 2019

Office Reference: JOB NO. 61962

## Cross Index Plat

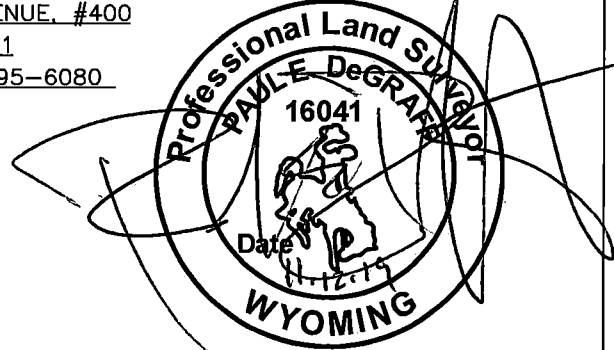


Firm/Agency, Address

Paul E. DeGraff  
Encompass Energy Services  
10901 W. 120TH AVENUE, #400  
Broomfield, CO 80021  
 Telephone: (303) 995-6080

This corner record was prepared by me or under my direction and supervision.

SEAL & SIGNATURE



RECP #: 772712  
 RECORDED 2/28/2020 AT 3:30 PM BK# 2661 PG# 1396  
 Debra K. Lee, CLERK OF LARAMIE COUNTY, WY PAGE 1 OF 1

Corner Name N 1/4 Corner Section 35, T 13 N, R 63 W, 6th P.M.

Cross-Index No.: V-19